

PART OF THE E. 1/4, OF SECTION 7, T.7N., R.1E., S.L.B. & M.  
**BRIGHT ACRES SUBDIVISION**

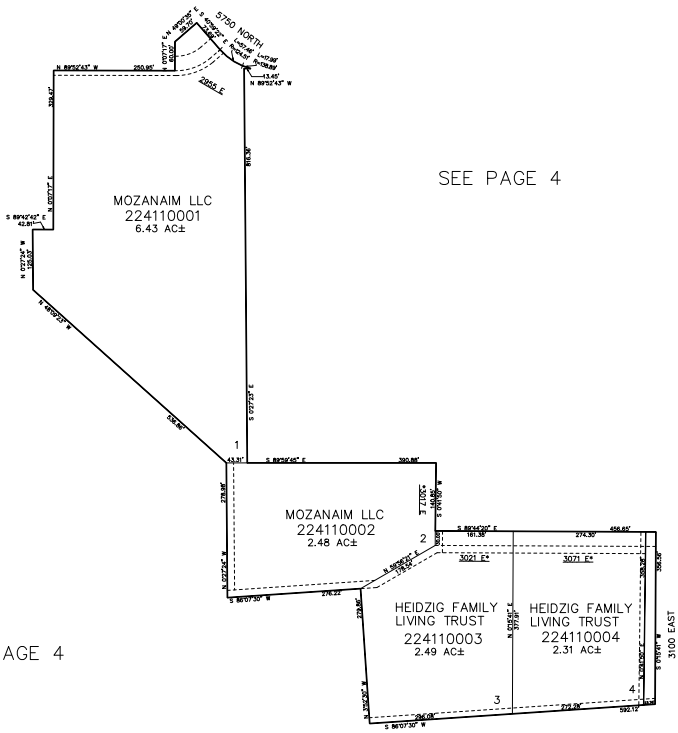
IN WEBER COUNTY  
SCALE 1" = 200'

TAXING UNIT: 36

SEE PAGE 4

SEE PAGE 4

SEE PAGE 4



10' UTILITY & DRAINAGE EASEMENTS EACH  
SIDE OF PROPERTY LINES AS INDICATED  
BY DASHED LINES EXCEPT AS OTHERWISE  
SHOWN.

FOR COMPLETE SURVEY DATA SEE  
ORIGINAL DEDICATION PLAT IN  
BOOK 94, PAGE 40 OF RECORDS.

\*ADDRESS AFFT E#3281442